

ELSOC FIRST YEAR GUIDE 2022

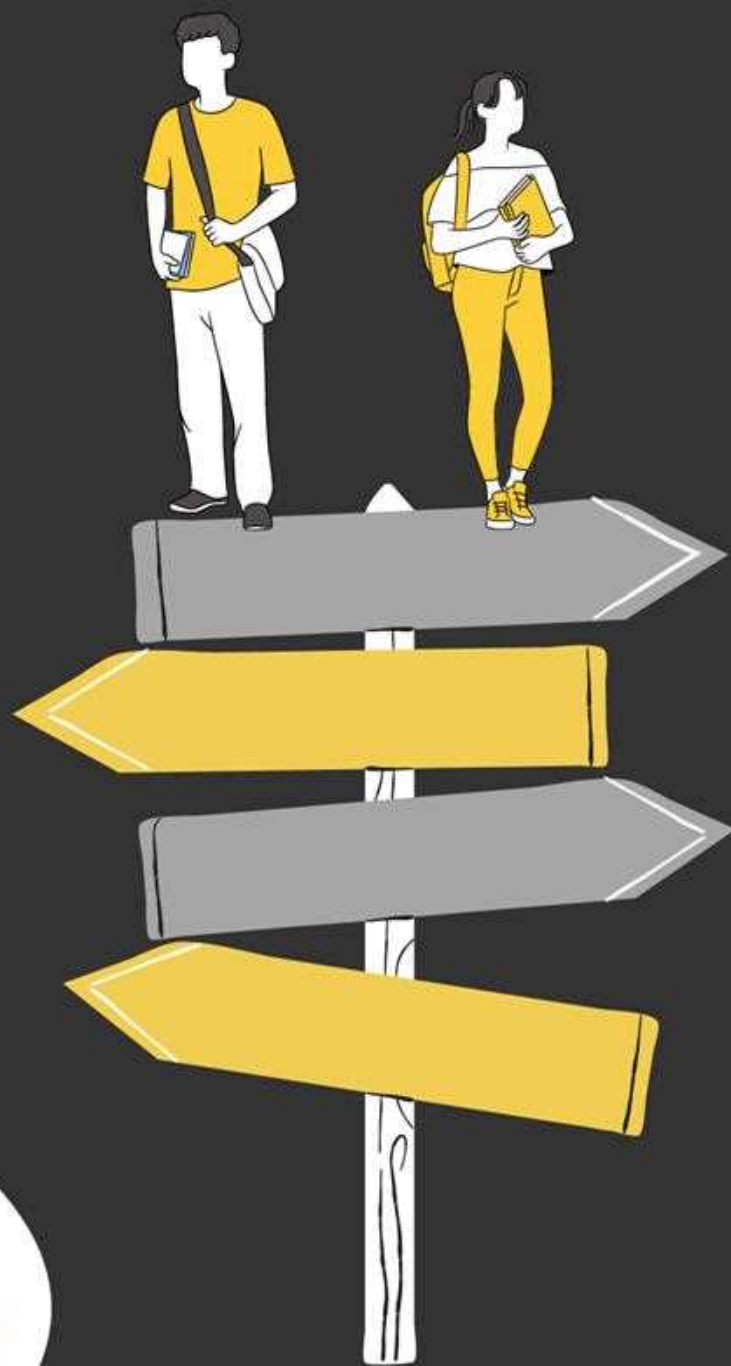


TABLE OF CONTENTS

1

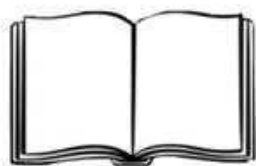
Welcome and Support



1.1 President's address	1
1.2 Head of School's address	2
1.3 Student support	3

2

Study and Academics



2.1 Course roadmap	4
2.2 Double degrees	5
2.3 Study quick tips	6
2.4 Additional resources	7

3

Socials and Careers



3.1 Getting involved.....	8
3.2 Other events.....	9

4

Miscellaneous



4.2 FAQs.....	10
4.2 Campus guide	11
4.3 Elly the Elephant	12

PRESIDENT'S ADDRESS

Congratulations on joining UNSW Electrical Engineering and Telecommunications! This is a huge achievement and you should be proud of yourself. ELSOC welcomes you to our amazing community. University is a great place for you to explore new avenues, make life-long friendships and discover more about yourself. However it comes with many challenges and ELSOC is here to be your home away from home at university and support you through this rollercoaster of a journey.

The transition from high school to university can be daunting and overwhelming. It's definitely scary walking into a lecture hall with almost a hundred students, not knowing anyone! I was in the exact same position as you just three years ago and I was definitely a nervous wreck in my first week. If I had a dollar for the amount of times I got lost on campus, I'd be rich enough to fund a small island. So if you're worried about not knowing many people yet, don't worry! Everyone else is also on the same boat. Don't be afraid to go say hi to someone and reach out for help. Here at ELSOC, we organise a ton of social events like BBQS, games nights, movie nights etc to help you easily connect with more students in your degree. Make sure to take advantage of these events and use them to grow your social network. Engineering is a really hard degree to go through without having friends to pull all-nighters with.

One of the biggest challenges I think first year students face is keeping up with the huge amount of lecture and tutorial content. At university you don't get reminders to do your homework so it's really up to you to make sure you're on top of your things. Studying with friends definitely makes it a lot easier but also don't be afraid to email your lecturers if you're having troubles or struggling with a certain topic. ELSOC also holds midterm and final crash courses as well as open lab and study sessions to support you academically. The electrical engineering community is very friendly and we are here for you so please feel free to ask any of us for help at any given time!

My biggest advice to you would be to really get out there and explore everything! Yes, academics are important but you want to make sure you're having fun as well. University is massive. I could go on and on about how many things you could be trying out. Give yourself the time to socialise, take a break and have fun! There's so many societies and clubs you can get involved in but before taking on any responsibilities, make sure to check that you have the capacity to take on those commitments.

And don't feel bad if you ever fail or struggle. No one here is having a smooth journey. We all have our ups and downs. Just know that there is an incredibly supportive network for you here at ELSOC who is always here to lend you a shoulder to lean on.

Engineering is so cool. You're in for a wild ride and I'm so excited for you.

- Nafisa Yashfee



HEAD OF SCHOOL'S ADDRESS

I would like to warmly welcome you to the UNSW School of Electrical Engineering and Telecommunications.

The School is the largest of its kind in Australia, and its international standing consistently attracts high calibre students from around Australia and globally.

Our education is internationally recognised for its quality and innovation, reflected in high student experience scores and teaching awards. Our academic, professional and technical staff are internationally renowned experts in their fields and offer the widest range of specialised elective courses nationally. Our education support team are ready to support you at all stages of your degree program, and welcome your suggestions on how we can improve further.

Our research has received the maximum 5-star rating of "well above world-class" in all Excellence in Research Australia evaluations. Multiple university rankings list us as the top School for research in Australia and well within the top 50 globally. We work closely with industry globally on dozens of cutting-edge projects that underpin and advance our technological society. You will experience this research depth and industry relevance first-hand during your honours thesis.

With \$104M recently invested, we are now home to many cutting-edge laboratory facilities that are unique nationally and offer you fantastic opportunities to develop as engineers. As a school, we continue to offer a challenging and well-balanced learning environment that has produced excellent and valued engineering graduates since its inception, and we are home to several fantastic student societies that I encourage you to join and be a part of.

Finally, let me reassure you that graduates from the degree program you have chosen are in high demand, across all disciplines – our Industry Advisory Board has made this completely clear as recently as December 2021.

I wish you all the very best with your studies, and look forward to meeting you at ELSOC events and in class.

- Julien Epps





STUDENT SUPPORT

Health and Wellbeing

It's so important to take care of yourself at uni, so visit the [Support and Development](#) page or the [UNSW Wellbeing](#) landing page for links to other services, or consider talking to a counselor at [UNSW Counselling and Psychological Services \(CAPS\)](#).

COVID-19

The COVID-19 situation is constantly changing. For the latest updates of UNSW's response to COVID-19 such as guidance on safe return to campus, click [here](#).

For International students

Check out the [UNSW International student portal](#) for links to peer support, details on UNSW policies, and more.

For Indigenous students

[Nura Gili](#) is a UNSW space that offers study and meeting places for First Nations students and researchers. The Nura Gili team provides tutoring, workshops and events. Check out the [Indigenous Tuition Program \(IPT\)](#).

Financial Support

Australia Citizens and permanent residents can get Commonwealth assistance like HECS-HELP, in addition to Centrelink payments and access to the National Disability Insurance Scheme, all detailed [here](#).

Make sure to apply for your [concession opal card](#) for cheaper fares!

ELS

If you have a physical disability, medical condition, learning disability, or are dealing with personal circumstances that affect your study, [Equitable Learning services](#) may be able to provide you with assistance. Don't be afraid to apply for [Special Consideration](#) if an unexpected event affects your assessment or exam.

LGBTQIA+

The [Ally Network](#) is a group of trained students and staff who are committed to making UNSW a welcoming place for everyone.

The [SRC Queer Collective](#) is an Arc group that aims to support and represent all queer students on campus. They run Queer Collective meetings and provide a Queerspace to relax and connect with other LGBTQIA+ students.

COURSE ROADMAP

*Roadmap only includes core courses for each specialisation and does not include any equivalent or additional courses. Please refer to the UNSW handbook



DOUBLE DEGREES

I'm currently in my fifth year, and switched from elec into elec/comp sci halfway through my second year. One of the good things about trimesters is that your degree is quite flexible, and if you were to add on a degree in your second year like I did, you may still be able to finish in the expected duration. So don't stress too much about having everything sorted in your first year!

What are the benefits?

- Variety of different subjects each term
- Knowledge from one degree complementing what you learn in the other
- More career options
- More opportunities to meet different types of people
- Can be easier to fit exchange into your degree
- More options for your thesis

Keep in mind that while there are these benefits, in many scenarios, you may be much better off with a single degree and a year of work experience, rather than doing an extra year of subjects you didn't enjoy and didn't pay any attention to. It's important to choose what's best for you.

How do you know what's best for YOU?

There will be many opportunities to get a taste of what other degrees might be like, including:

- Your first-year subjects
- ENGG1000 group project (Don't be afraid to pick a non-elec project!)
- Your general education subjects (You could do one of these in your first year!)
- Joining societies

If you find something you're interested in, you can easily switch into your new degree by completing an internal program transfer (IPT), just keep in mind that there is a minimum WAM requirement for some degrees.

Good luck with the start of your first year, and I hope to see you at an ELSOC event soon!



- Jack Murray

STUDY QUICK TIPS

TAKE NOTES about your lecture **DURING** your lecture! Whether you attend your lecture live, or watch a recorded one, make sure to take notes on what is actually being done. Bonus points if you do the exercises as the lecturer does it! It will help you learn new concepts much more quickly.

USE TECHNOLOGY. Drawing tablets are a great way to save paper and time (if you have the budget) - you can write on lecture slides that are uploaded to Moodle, or do all of your practice questions on there as well!

KEEP TRACK of your lecture notes! Have a place to store them (either physically or digitally... whichever is less hassle). These will be super important if you write up summary notes later on in the future.

FIND A BALANCE between studying, work (if you work) and life. Sometimes time taken away from subjects is actually beneficial for your learning in the long run. It is very easy to get burnt out if you're not too careful!

PRACTICE practice practice! You're not going to be a god at ELEC1111 overnight, it takes time and work. If you are, great for you, but skill comes through persistent practice not JUST natural talent. Do as many past questions as you can get your hands on if you really want those full marks!

MAKE MISTAKES. One of the best ways to learn is to make mistakes. Now hopefully this isn't in an assessable situation, but tackling difficult and challenging problems head on often makes the less difficult problems much, MUCH easier. Give it all a go!

LEARN WITH PEOPLE. Learning is so much easier and enjoyable when you work together with others. Get involved in Facebook group chats, Discord groups etc. Teach concepts that you understand well to people who may not, and allow yourself to be taught by others as well. The more you collaborate and work together, the more fun it is!



ADDITIONAL RESOURCES

COURSE GUIDES

You've enrolled in your courses, yet you still have no real idea what they are about, or how to study for them. Is this you?

COMING SOON!



STUDY METHODS

Everyone learns differently. Check out some methods that EE/T students have used to learn their lecture content.

COMING SOON!



INTERNSHIP EXPERIENCES

Find out what it's like working at large multinational companies as part of the required 60 day internship.

COMING SOON!



GETTING INVOLVED



ELSOC
EST. 1954



First Year Camp

Our annual First Year Camp is happening during week 5 of term one and brings you to the most incredible weekend getaway of your life! Are you an incoming first year looking to know your fellow cohort? Do you want to make life-long friendships and cherish great memories?



Peer mentoring

The Peer Mentoring Program aims to help first year students transition into and easily navigate through university. First year students will be placed in groups and paired with two mentors who will be able to provide academic support and answer all questions about what electrical/telecommunications engineering in UNSW is like.

Subcommittee recruitment

As a subcommittee member, you will have the opportunity to have your unique skill sets recognised so that you may work alongside other motivated students and make an impact. Apply during T1 so that you don't miss this opportunity to develop your interpersonal skills and make lasting friendships.



OTHER EVENTS

Social

Movie night *Game night*
BBQ *Cruise* *Pub crawl*
Laser tag *Murder mystery*
Trivia night

Academic

Midterms crash course
Finals crash course

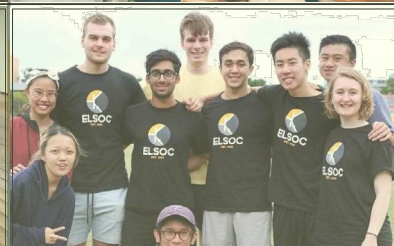


Industry

Industry night *Alumni night*
Hackathon *Sponsorships*

Workshop

Intro to labs *Soldering*



FAQS

Is Electrical Engineering right for me?

The workload can be intensive and some concepts may be very difficult to grasp. However, the real world applications and career paths are endless. Besides, you don't have to be the smartest person in the world to do an Electrical Engineering degree, you just have to put in a little bit of work very regularly and you'll do well!

What is the best way to make friends?

There is only one way to make friends at university, and that is to put yourself out there. We know that this can be especially daunting during classes or group work because some people are very cliquey or just want to get their work done. So, take advantage of social events where people will be generally way more open to meet people.

Where are the best places to study?

At UNSW there are so many places to study at apart from the main library!
In the elec building, the 3rd floor is the most popular with the most study spaces.
The business building has many study spaces and even a microwave. There is a not so well known corridor connecting it to the quadrangle.
The law library, particularly upstairs, is another popular but limited study spot.

Know that you can book rooms if they are free, you can find more information [here](#).

Do I need to buy textbooks?

This is a big NO. It is very common to hear people complain about how expensive textbooks are, but we can assure in that in most cases, textbooks are just a prescribed resource that you may choose to use. Textbooks can be found online or at the UNSW library or Bookshop.

Where are the best places to eat?

On lower campus, there's a GYG, as well as sharetea nearby for the boba lovers. Yallah eats has the best bang for your buck, but don't forget the roundhouse for pub food and drinks.
In the upper campus there's a subway and a Boost next to it, as well as a small food court tucked away near the Main Library just to name a few. There's lots more! A lot of fun comes from exploring the campus and trying different places yourself.

How do I become a part of the society?

You can become officially integrated into ELSOC by applying to be part of a sub-committee, or a director or executive position. Keep a keen eye out on our socials to see when these opportunities arise!

Have any more questions?

Contact us on any of our socials. Alternatively, you can pop into the ELSOC office anytime. Our team is always happy to answer any burning questions or to just have a chat. See you there!



CAMPUS GUIDE



Getting to UNSW

- The L2 from Central Station will take you to Upper Campus via High St
- The L3 from Central station will take you to Lower Campus via Anzac Pde
- Buses like 391, 393 and 395 all take you to Lower Campus via Anzac Pde
- Casual parking is paid using the CelloPark app

Finding your way around

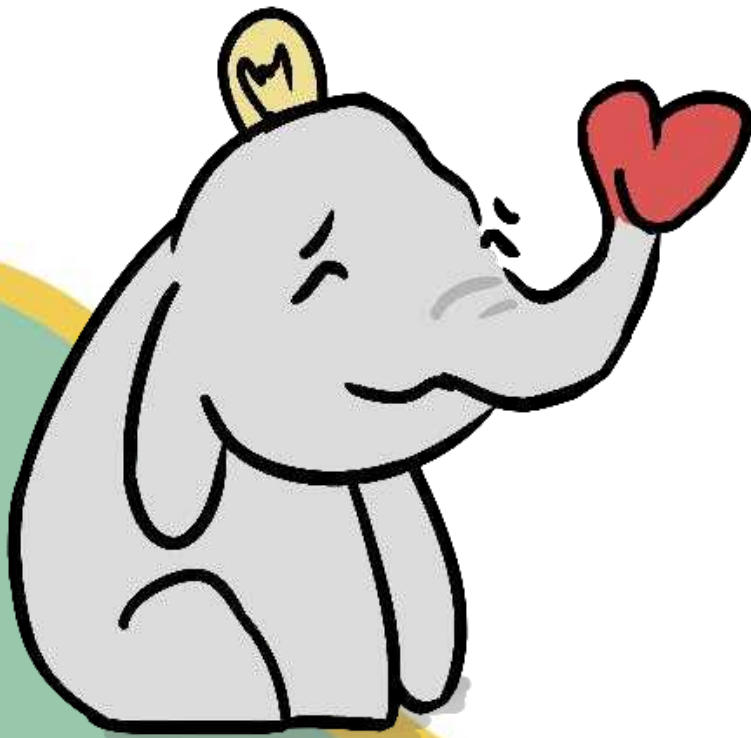
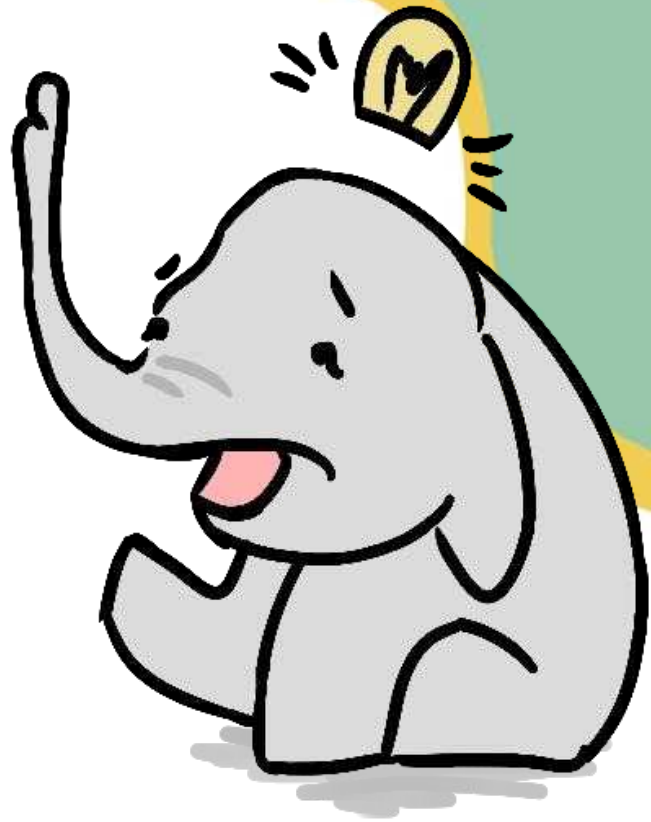
- The Lost On Campus app directs you anywhere on campus, including specific rooms
- UNSW's online interactive map shows all important locations
- Google Maps will only direct you to major buildings



ELLY THE ELEPHANT

ELLY D.

THE ELSOC
ELEPHANT



Watch out for our new mascot Elly... She'll be hiding in our weekly newsletter and website, as well as making appearances on our socials!





FIND US

@UNSW ELSOC



@unswelsoc



@ELSOC UNSW



@UNSW ELSOC



LOCATION

Room 210, Electrical
Engineering Building G17